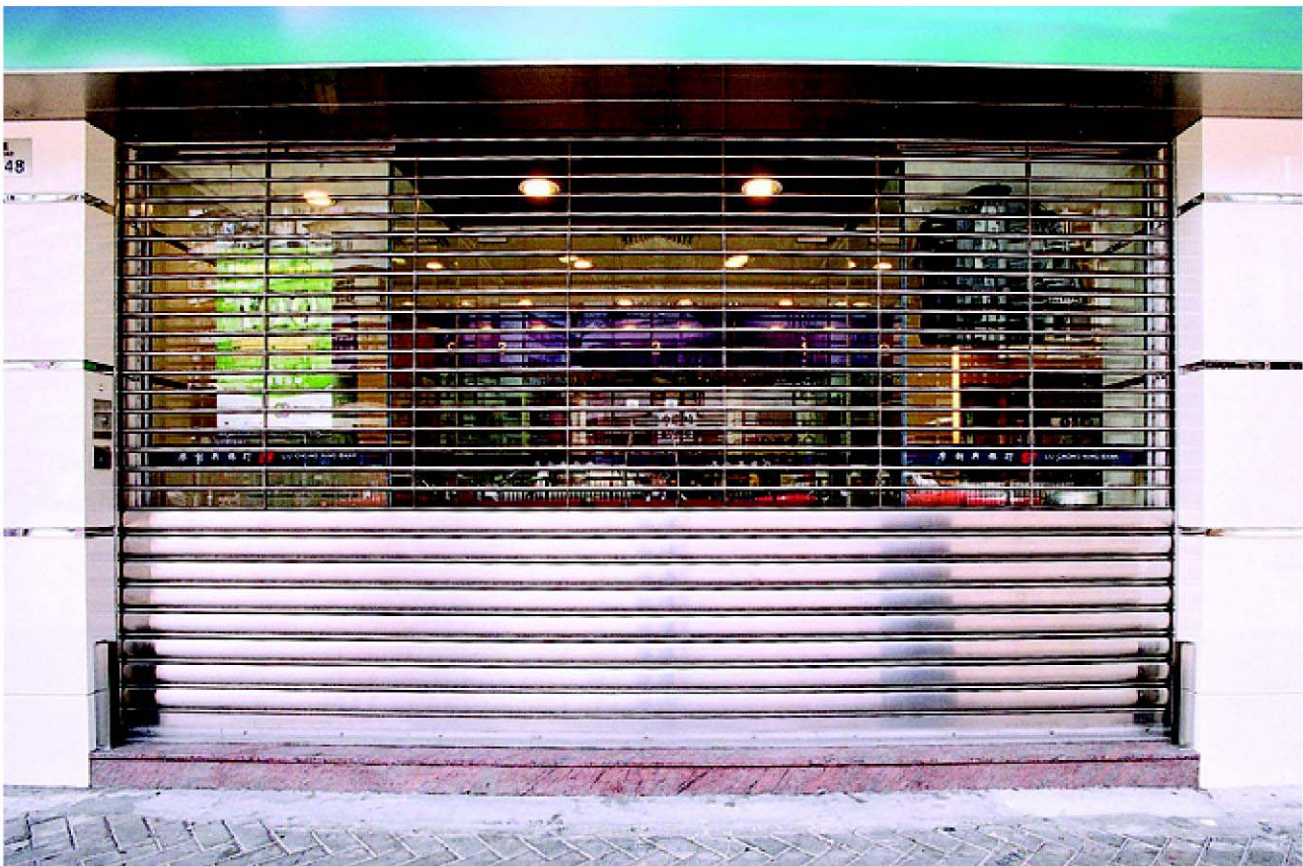




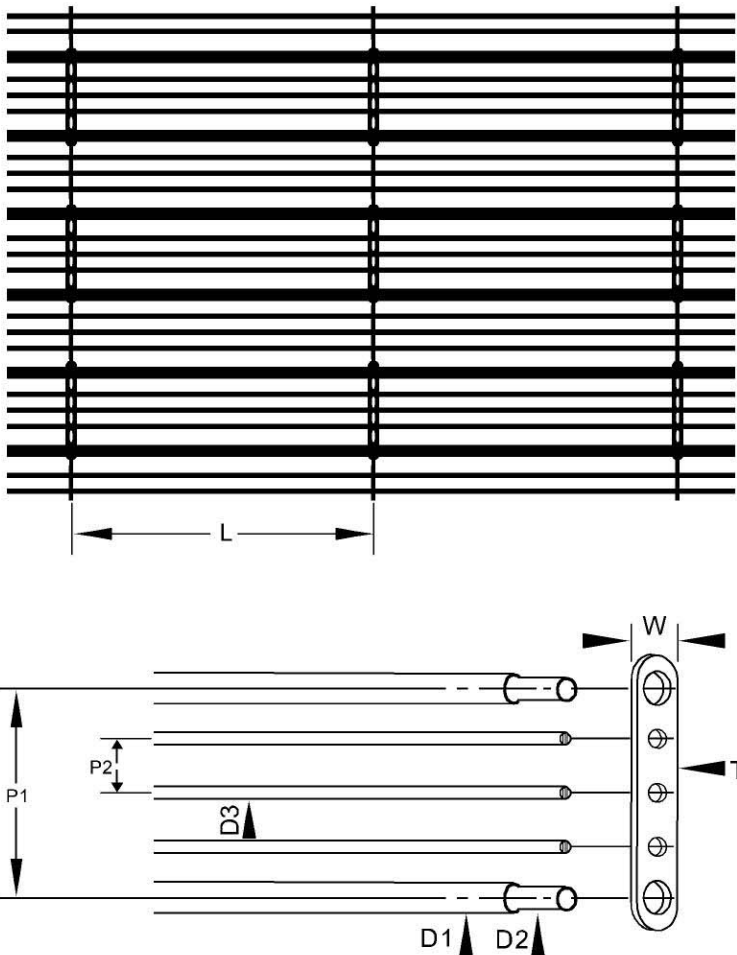
A partial grille / partial perforated stainless steel roller shutter at the subway entrance of MTR station.



A bank with partial slat / partial grille stainless steel shutter.

Rolling Screens
Rolling Screens are close cousins to grille shutters. Designed to stop small objects from getting inside one's property, they were originally made for transformer rooms where small wild animals made frequent unwelcome visits. Since the distance between each in-line tube is merely 13mm, birds, bats and other small intruders are prevented at the rolling screen.
Rolling screens enjoy the same flexibility and security as traditional grille shutters. That means large amount of air and light are expected to pass through, yet they are strong enough to keep bigger, tougher intruders at the right side of the screen.

- Shutter Curtian:** • A set of rolling screen linked up by horizontal axis to form a continuous rolling curtain.
- Material** : • Stainless steel SUS 316 & stainless steel SUS 304
- Model No.** : • RLS21 / RLS31
- Size** : • Width up to 20000mm and height up to 10000mm
- Operation** : • Manual operated (vertically sliding)
• Electric operated (vertically sliding)
• Electric operated (laterally sliding)
• Electric operated (horizontally sliding)
- Special Feature** : • Built with wicket door



SPECIFICATIONS

Pattern Number	W	T	P1	P2	L	D1	D2	D3
RLS 21	19	3	76	13	300	13	10	5
RLS 31	25	3	76	13	600	20	15	5